

The New Generation Mobile C-arm X-Ray

POLARIS[®]

The Friendly Solution to Your Clinical Demands



www.pckmed.com
www.pckmedical.com

The High Performance of **POLARIS**

In this new generation Polaris, we have concentrated on all the small details that will make your everyday routine easier

The new generation PCK Polaris Mobile C-arm is an ideal X-ray system to provide fluoroscopic and radiographic imaging for **a variety of clinical procedures**, including applications in orthopedics, urology, general surgery and gynaecology or minimally invasive procedures as well as gastrointestinal surgery or vascular intervention.

The counter-balanced C-arm provides for fast, easy and **precise X-ray positioning** in every plane of projection while allowing enough room for the proper positioning of the patient.

Laser targeting device is another option working in cooperation with the laser aimer placed on the image intensifier for accurate positioning, at the same time avoiding unnecessary radiation.

The **space-friendly design** of the new generation Polaris C-arm is a real pathfinder even in smallest working environments, with its optimized mobility and transportability.

The comfortable steering mechanism and the integrated wheel cable deflectors, which contribute to the **ease of mobility**, are two good examples of those small details that will satisfy you.

You can select among a number of configurations to fit your needs from the basic to more complicated, which is a great advantage thanks to the **on-site upgradeability** of the system, simply depending on your needs and demands.



Ergonomic handles on both sides of the C-arm provide easy guidance.



Superior **POLARIS** Images

With a Large Memory Capacity

The new generation Polaris ensures **high image quality** with its high definition image components and advanced dose management, including boost fluoroscopy and super shot techniques.

These components have proven to generate high resolution fluoroscopic and radiographic images.

In spite of the fact that **boost fluoroscopy** and **super shot** features expose a high dose for a very short period of time, they minimize the harmful effect of radiation while maximizing the image clarity.

State-of-the-art **image processing** functions assist you to diagnose more precisely by making fine details visible to human eye.

Motorized collimator with three different blades gives a round image, at the same time, allowing a rectangular area to be examined.

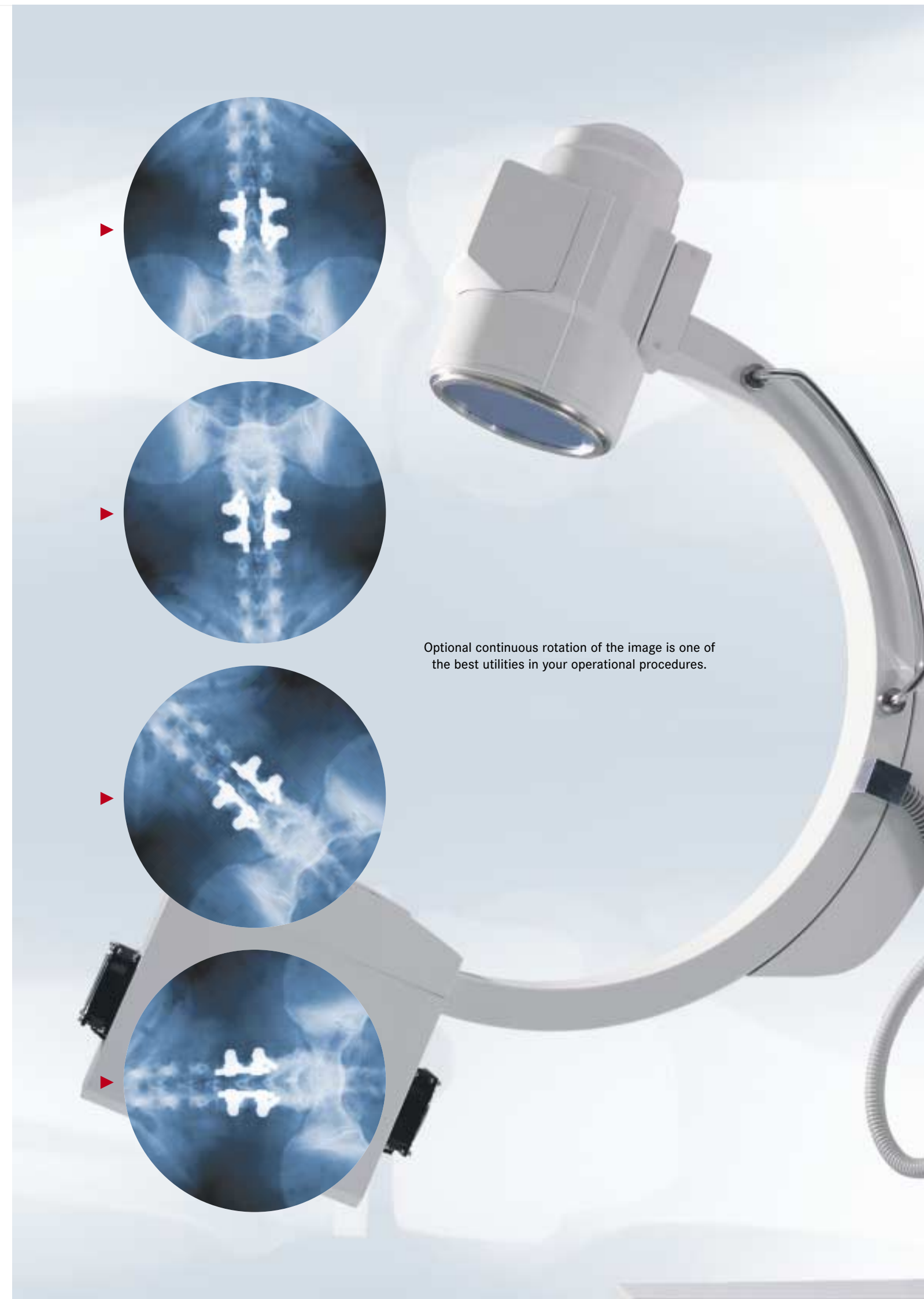
Besides its "Last Image Hold" and "vertical and horizontal image flip" features, **High resolution CCD camera** generates high-contrast images. Recursive filtration and motion detection are features of the CCD camera to get distortion-free images.

The image intensifier used in the new generation Polaris is a high definition, three-field component with an optional grid attached to it for even better images. The perfect match of the quantum efficiency of the CCD camera to the output phosphor of the image intensifier combined with a very low readout noise enables a significant dose and noise reduction in high-resolution fluoroscopy, particularly in the magnifying modes of operation.

Memory Capabilities

- ▶ Live image recording & playback
- ▶ Active window function
- ▶ Contrast & brightness adjustment
- ▶ Display annotation (e.g. patient name, date)
- ▶ 16-image collage
- ▶ Edge enhancement
- ▶ Zoom / Roam
- ▶ Horizontal & vertical image rotation
- ▶ Optical disc memory of more than 1000 images in DICOM format
- ▶ Positive / negative image inversion
- ▶ Print-out from laser printer

* Some functions are optional.



Optional continuous rotation of the image is one of the best utilities in your operational procedures.

POLARIS

Vascular Imaging

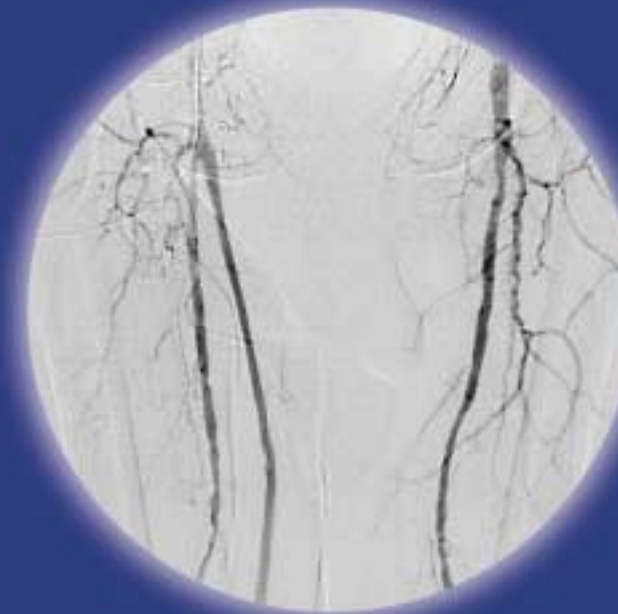
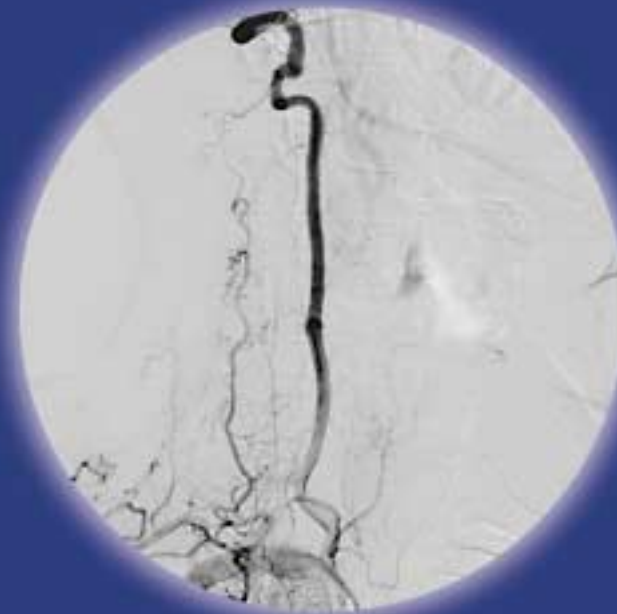
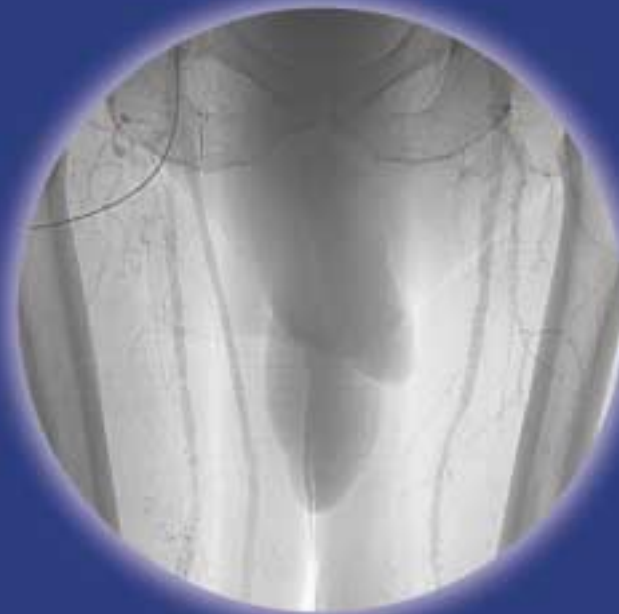
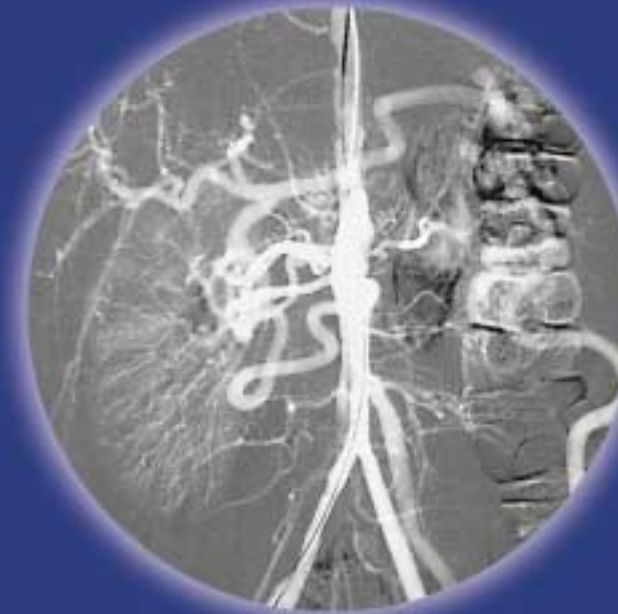
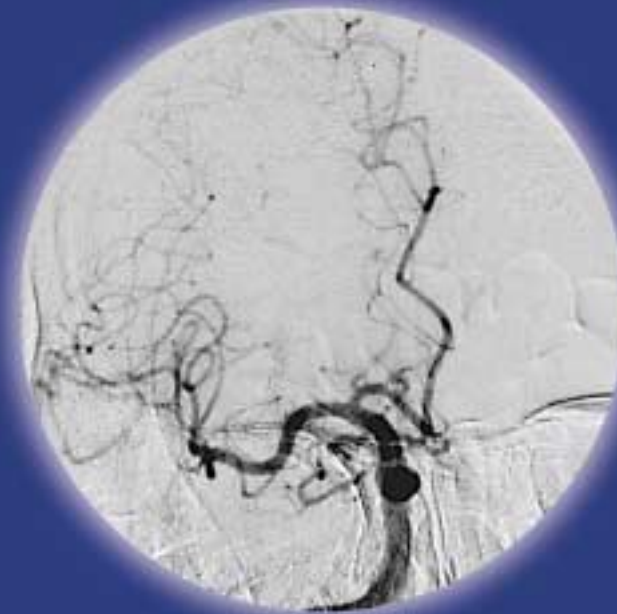
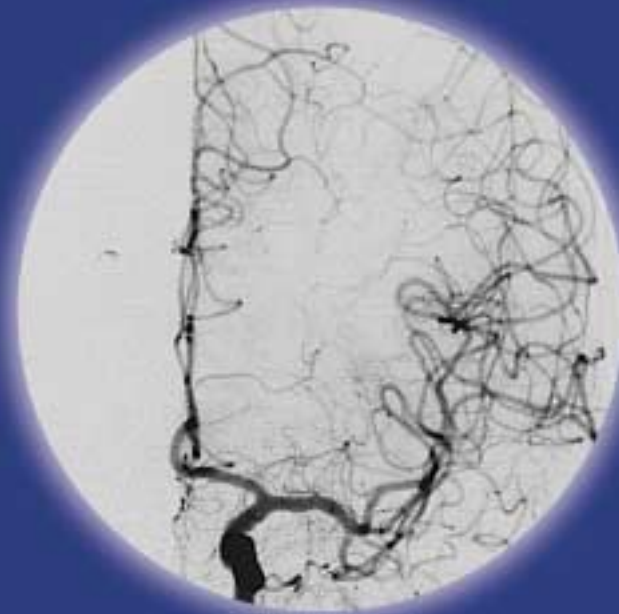
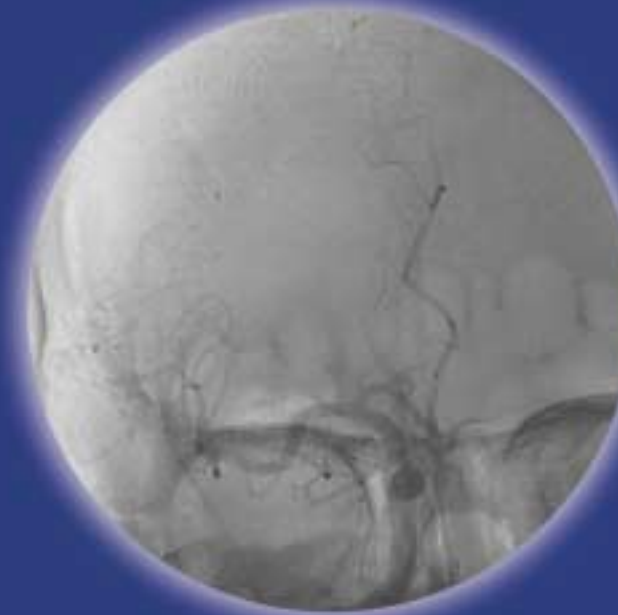
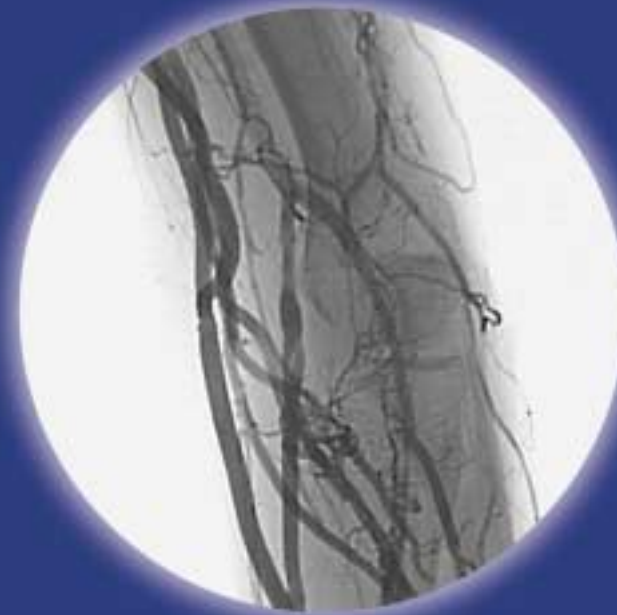
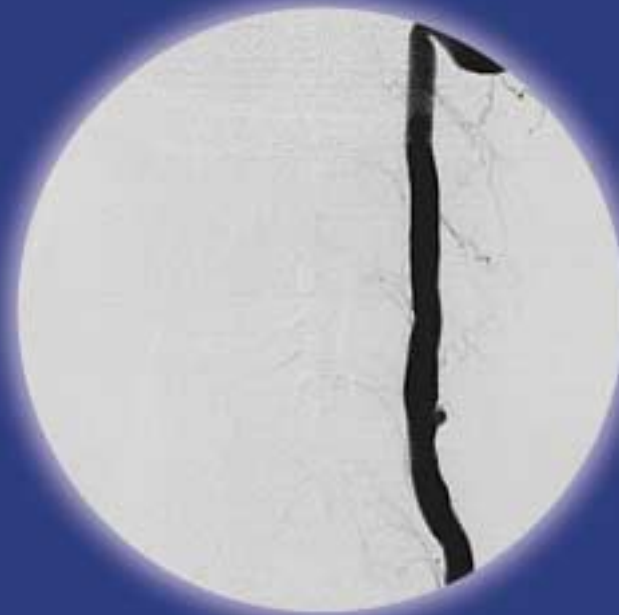
The new generation Polaris is ideally designed to meet today's increasing needs for vascular procedures. Its **software components** are also suitable for future expansion and upgradeability.

High-output X-ray generator is a challenge for diagnostic and interventional applications. The high-frequency generator provides pulsed, digital cine techniques.

Thanks to the high-power pulses, the system captures clear images of vascular anatomy during angiography procedures. What is more, with the **high heat storage capacity**, you have no limitations depending on heat.

Vascular Features

- ▶ Digital Angiography
- ▶ Digital Subtraction Angiography
- ▶ Roadmapping
- ▶ Pixelshifting
- ▶ Remasking
- ▶ Simultaneous display of native and subtracted image



POLARIS®



Please visit our web sites for e-mail addresses.

www.pckmed.com www.pckmedical.com

Technical specifications are subject to change without notice.

 **PCK** Electronic Industry and Trade Co., Ltd.

HEAD OFFICE

Turan Güneş Blv., Konrad Adenauer Cad.
59/1 Sancak, Çankaya 06550 Ankara TÜRKİYE
Phone: +90 (312) 491-6010 Fax: +90 (312) 491-6011

FACTORY DIVISION

Ankara Sanayi Odası 1. Organize Sanayi Bölgesi Orhan
Işık Cad. No: 4 Sincan ANKARA
Phone: +90 (312) 267-2046 Fax: +90 (312) 267-0609